

# CHOOSE



University of  
**Salford**  
MANCHESTER

# WELCOME TO THE UNIVERSITY OF SALFORD

Thanks for applying to study with us. Your choice of university is an important decision, and we're here to help you make the right one.

Now you have chosen your course and have been offered a place, we'd like to give you more detail about the University. This brochure will give you information about life at the University of Salford, such as accommodation options, things to do in the city, and the support that's available to you.

Our aim is to ensure our students are ready to enter their chosen career after graduating, so our courses are informed and shaped by industry leaders. Many of our academics are practising professionals, world-class researchers, or both. Our careers and employability service is available to

you for life, not just while you're a student with us, and our specialist support team can help you find work placements, voluntary positions or paid work.

Follow us on social media for the latest updates:



The international recruitment team here at the University of Salford is here to support you at every stage of your journey. If you have any questions feel free to email us at [international@salford.ac.uk](mailto:international@salford.ac.uk) and we look forward to meeting you on campus very soon!

**University isn't far away.**



# WHAT'S NEXT?

**Congratulations** – you have been offered a place! Please reply to your offer as soon as possible, and then make sure that you complete the following steps:

## ENSURE THAT YOU MEET ALL OF YOUR OUTSTANDING CONDITIONS

If your offer is 'conditional', there are a few further steps you need to take in order for your offer to turn into one that is unconditional. If your offer is conditional upon academic results or proof of English language, get these to us as soon as you can.

2

## PAY DEPOSIT OR PROVIDE PROOF OF SPONSORSHIP

International students must pay a tuition fee deposit of £4,400 before they arrive at the University, and before we can issue a CAS (certificate of acceptance of studies). Sponsored students (students with an official financial sponsor) must provide official evidence of financial sponsorship. [Visit our website to check if you need a visa.](#)

3

## APPLY FOR ACCOMMODATION

Complete the online application for accommodation as soon as you have accepted your offer. Accommodation is not guaranteed, but offered on a first come, first serve basis. Find more details about the different accommodation options [on our website.](#)

4

## RECEIVE CAS AND PREPARE TO APPLY FOR YOUR VISA

The University will send a draft CAS by email which you must check and confirm the details are correct. Full instructions on this will be fully detailed in the email. You will need your CAS number to apply for a study visa. Find out more about the process [on our website.](#)

**Sponsored students** – once you have confirmed by email that the details on your draft CAS are correct, we will send your CAS number to you by email. You will also be required to upload your sponsorship letter. This must be addressed to the University and state exactly how much you are being sponsored for.

**Self-financing (non-sponsored) students** – as part of your CAS request, you will be required to upload your bank statement which demonstrates that you have the required amount of maintenance funds in place before you apply for your visa. The current level of funds required to prove you can maintain yourself whilst in the UK is £1,015 per month for yourself and £680 per month (each) for any dependant(s) that you bring with you, up to a maximum of nine months. If your course duration isn't given in whole

months, the number of months' maintenance costs you are required to show will be rounded up a month (so, if your course is three months and one week long, you'll need to show four months' maintenance costs).

**Students supported by parents** - if you are supported by your parents and you are uploading their bank statements, it will be necessary to upload documentation which shows their relationship to you, i.e. a birth certificate.

Failure to provide any evidence of maintenance will result in your CAS request being denied. You should not apply for a visa if any of the information on this CAS statement is incorrect as doing so will lead to your student visa application being refused. yourself at home

Before you can apply for your study visa, you will need to pay the Immigration Health Surcharge (IHS) and obtain your IHS number for inclusion on your study visa application form. For information on the IHS, [please visit our website.](#)

For more detailed information on preparation prior to arriving in the UK [see the Welcome section on our website.](#)



# MAKE YOURSELF AT HOME



Moving from your home country to the University of Salford is a big change. University accommodation is a great way to immerse yourself in student life, while ensuring you're living somewhere that's safe, secure and environmentally friendly.

Rents start from between £87 and £118 per week, depending on site and room size. This includes all utilities (water, electric and gas), contents insurance, 24/7 security and high-speed WiFi. We also have flats for couples and adapted rooms and facilities for students with additional requirements. Our accommodation is not guaranteed, but offered on a first-come, first-serve basis, so don't delay in applying for your place.

## AFFORDABLE LUXURY

**Peel Park Quarter is our new, purpose-built living area at the heart of Peel Park campus.**

### Benefits include:

- Convenient campus location
- Choice of five different on-suite room options, with larger beds as standard
- Cinema room
- Free gym
- Laundry room

**John Lester and Eddie Colman Courts - Affordable accommodation, close to Peel Park Campus as well as MediaCityUK.**

- Choice of five different types of flat, including the newly refurbished vLodge flats (with fantastic views!)
- Free gym, basketball court
- Free parking
- Laundry room
- On-site library



# STUDENT SUPPORT



## ASKUS SERVICE

askUS is our advice and support service which can help you with a wide range of issues, including careers and employability, disability and learner support, visas, health and wellbeing and money matters. All our support specialists are located in one building on the main Peel Park campus, making it easy for you to find the help and advice you need. Find out more [on our website](#) and read on for an overview of some of our services.



## SUPPORT WITH YOUR CAREER

There's a great range of career and employability services, and our experts can:

- Give you access to the latest jobs information and work experience
- Give careers advice
- Review your CV
- Introduce you to employers
- Give you insight into occupations
- Help you develop your study skills
- Provide enterprise support

If you choose to work part time during your studies, we have connections with lots of local employers offering jobs across Greater Manchester. The University works with many employers to source jobs that you can apply for, as well as on-campus jobs with the University and our Students' Union. You can also apply for placements and graduate jobs, and careers advice and support is available. Remember that studying for a degree is a big commitment; make sure you have

enough time to dedicate to your studies. As a tier 4 visa student, you may only work up to 20 hours per week during term-time.

Support doesn't end when you leave us – our careers and employability service is available for life, along with a wide range of other alumni benefits. Visit the careers section of our website [to find out more](#).

## FAITH AND RELIGION

Our chaplains and faith advisers provide spiritual guidance and pastoral care to our students and staff of all faiths and none. The team offers regular services, prayer, and a place to talk about any concerns you may have. They also host social events and can give you information about local places of worship. More details are [available online](#).

## INTERNATIONAL CAFE

[International Cafe](#) is a free weekly social hosted by askUs, which is open to all students. Every Wednesday evening, students are invited to come along to meet people from different cultures and play games including cards, chess, table tennis and table football. Free tea, coffee and refreshments are provided, and each Cafe has a different theme, so you can learn something new each week.

## INTERLINK FOR INTERNATIONAL STUDENTS

We understand that sometimes it can be difficult when you arrive in a new country and leave your friends and family behind. It can be hard getting used to different places and different ways of doing things by yourself. That's why we've created InterLINK for you. InterLINK 'mentors' are home students (students from the UK) who can give you, as an international student, friendly advice and support and help you to get used to living and studying here at Salford. You can apply to be supported by Interlink before you arrive in the UK, [find out more online](#).

## THE INTERNATIONAL SOCIETY

The International Society is run independently for all international students from the University of Salford, Manchester Metropolitan University and Manchester University. It's based in Manchester and organises classes, social gatherings and outings across the UK. For more information, [visit the society's website](#).

## STUDENTS' UNION

The University of Salford Students' Union (USSU) is run independently from the University, to help you love your life at Salford. It is made up of student-elected representatives and provides:

- Low cost meals in Atmosphere Kitchen and Bar
- Three shops on campus, selling low-cost supplies and groceries
- Over 100 different activity groups and sports teams
- Social events such as comedy nights and quizzes
- Paid job opportunities for students
- NUS Extra discount cards for high street shops and services

## SAFETY AND SECURITY

We want you to feel safe at all times whilst you are on campus or at our partner accommodation sites. Many parts of the academic campus are served by CCTV cameras monitored 24 hours a day, and our award-winning University Security team can be contacted at any time. Staff and students also watch over the campus and each other as part of the Campuswatch scheme.



# SCHOLARSHIPS AND BURSARIES

The cost of higher education can be expensive - but it's an investment into your future.

The University of Salford has some great scholarships and bursaries available that are dependent on your circumstances (and you don't have to pay them back).

## SCHOLARSHIPS AND BURSARIES AVAILABLE

### ***Vice Chancellor's Undergraduate Excellence Scholarship***

This international scholarship is worth **£3,000** or **£5,000** depending on which course you choose to study.

### ***Vice Chancellor's Postgraduate Excellence Scholarship***

This international scholarship is worth **£4,000** if you take The Salford MBA, MSc Petroleum and Gas Engineering or MSc Gas Engineering and Management. For all other courses, this scholarship is worth **£2,000** if you achieved less than a 2:1 or **£3,000** if you achieved a 2:1 or above.

### ***Chevening Scholarships***

are available to students from more than 160 countries and territories worldwide (excluding the USA and EU), the scholarships are awarded to outstanding scholars with leadership potential. Awards are typically for a one year Master's degree at universities across the UK. The University of Salford also offers five full tuition fee and stipend scholarships available across



all programmes and unlimited 20% tuition fee reductions are available. For more information [visit the Chevening website](#).

### ***International Student Bursary***

is worth **£1,000**. You could qualify if you are studying for a full-time undergraduate or postgraduate taught course and you come from a country classified as 'low/medium income' by the World Bank. [See which countries are covered by the scheme](#).

We also have subject specific bursaries; [visit our website to find out more](#).

If you are from one of our NCUK partner centres we also have a generous scholarship offer for you. [More details are available on our website](#).

There is no need to apply for the University's scholarships or International Student Bursary, your application will automatically be assessed for these. All information about the scholarships and bursaries available is [on our website](#).





# MANAGING YOUR STUDENT FINANCES

Before moving to a new country you will have a lot to think about, so to make it easier we have created the guide below for all of the fees you will need to pay.

## HOW MUCH WILL I NEED?

The UK Visas and Immigration (UKVI) office requires that you must provide evidence that you have sufficient funds to support yourself throughout the whole period of your studies. Without this, you will not be able to obtain a visa.

Costs that you will need to consider:

- Living costs: a minimum of £9,135 per year
- Study deposit (paid before you begin your course): £4,400

- This is required before we can issue you an unconditional offer and give you your Certificate of Acceptance for Studies (CAS).
- Undergraduate fees: £11,000 – £17,000 per year
- Postgraduate fees: £11,000 – £18,000 per year
- The [Immigration Health Surcharge](#): £150 per year

Please note all fees are correct at time of production (August 2016).



For more information on living costs, please visit the information that the government provides [online](#).

You can choose to pay your fees in full before your course starts and save **3% of the net total**, or in five equal monthly instalments. For specific course fees, please visit the relevant course page that you're interested in [on our website](#).

Students from the USA are eligible for a study deposit waiver if they qualify for a US Federal Study Loan. More information on this is [available online](#).

## COST OF LIVING IN THE UK

Living costs are more reasonable in Salford and Manchester than many other cities in the UK. We've provided a few examples below of everyday costs.



### ACCOMMODATION

University accommodation ranges from **£87 to £139 per week**, depending on site and room size.



### UTILITIES AND OTHER OUTGOINGS

If you are not living in university accommodation, **you'll need to take into account the cost of bills for water, electricity, gas and internet**. Also, if you have a mobile phone, budget for calls and texts home.



### FOOD AND GROCERIES

There are **a range of supermarkets to suit every budget**, as well as farmers markets and independent shops. Preparing fresh meals rather than buying pre-prepared or takeaway food will save money. Don't forget to budget for cleaning products and toiletries as well.



### TRANSPORT

**A weekly bus ticket costs about £13**, and a **single ticket on the tram costs from £2.80**, depending on your destination. Manchester and the surrounding areas are also served by a number of convenient and attractive cycle routes.

**ACCOMMODATION + FOOD + BILLS**  
**=£170-£220** ON AVERAGE PER WEEK

YOU CAN OBVIOUSLY SPEND MORE OR LESS THAN THIS, DEPENDING ON YOUR BUDGET AND LIFESTYLE!



### BOOKS AND STATIONERY

New textbooks for your course can be expensive, **so make sure you use the library as much as possible**, or buy books second-hand to save money.



### CLOTHES AND GROOMING

Things like haircuts and winter coats need to be included in your budget. **The best way to find a good deal is to shop around** – there are plenty of affordable hairdressers and clothing shops in Manchester.



### HEALTH AND FITNESS

The University gym membership costs between **£12-18 per month**. University sports teams will charge weekly membership fees, plus kit costs.



### LEISURE

A cinema ticket costs about £9, and theatre tickets between £25-70. An evening meal at a restaurant with friends typically costs around £12-15, plus the cost of any drinks. **There are many free events, galleries and museums in Salford and Manchester** and as a student, you are entitled to discounts in many shops, restaurants, and cinemas.

There are lots of tips for managing your money and saving cash at [www.askus.salford.ac.uk/page/moneymanagement](http://www.askus.salford.ac.uk/page/moneymanagement)

# STUDENT LIFE

There's more to student life than your chosen course, and the city you choose to live in makes a big difference to your university experience.

We're located just minutes from Manchester city centre, with one of Europe's largest student populations – and all of the culture that comes with it.

## PARKLIFE

- Greater Manchester's popular music festival
- Held in June in Manchester's Heaton Park

## TRAFFORD CENTRE

- The second largest shopping mall in the UK
- Cinema, bowling, restaurants and laser games, all open late
- 7.7 miles from campus – easily reachable by bus

## LIVERPOOL

- Dockside city with lively nightlife
- Visit the Beatles Museum and the Tate art gallery
- 33 miles from campus – regular trains from Manchester

## PRINTWORKS

- Everything you need for a great night out
- Great entertainment venue, with cinema, clubs, bars and restaurants
- 2.2 miles from main campus

## ICE SKATING

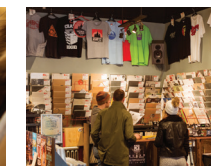
- Ice skate all year round at Altrincham's Silver Blades rink
- 8.6 miles from campus

## SPORT

- Manchester United's football ground Old Trafford is just 3 miles away from Peel Park campus
- Manchester City Football Club's Etihad Stadium, the Manchester Velodrome and the National Cycling Centre are all located only 3.5 miles away at SportCity
- 14 all weather football pitches are located at Power League, just over 3 miles away, which can be booked online

## SALFORD QUAYS

- Home to the BBC and ITV (and the Coronation Street set)
- Imperial War Museum, Lowry Theatre, shops and restaurants
- 1.7 miles from the main campus – a free bus is available from Peel Park





To make sure you have everything you need before you arrive we can come and visit you. [Find out more](#) about whether we are hosting a Pre Departure Briefing in your country over June, July and August.

If you are holding an offer for another start date, find all of the information that you need by checking the information [on our website](#).

Don't forget any other questions you have you can always contact us at [\*\*international@salford.ac.uk\*\*](mailto:international@salford.ac.uk) or through any of our social media channels